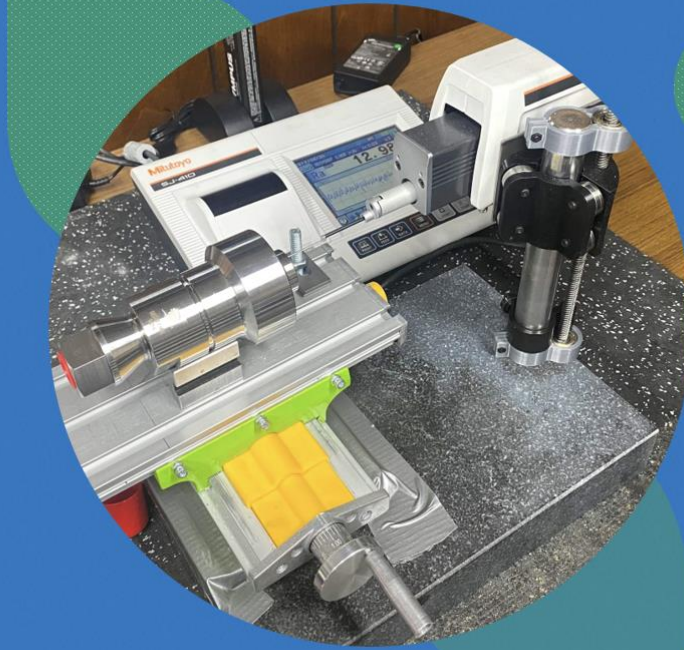


Paying Attention to the Details

Globally Sourced to provide our customers the best value in the Industry. HPP Elements High - Pressure parts are put through our proprietary process in our Southwest Michigan Headquarters to ensure our customers get the most consistent surface finishes in the HPP Market



HIPERBARIC AFTERMARKET HIGH QUALITY PARTS

HPPELEMENTS

“Keeping the Pressure On”

2024

HPP Elements / HPPAdvisors is not affiliated with Hiperbaric in any way, shape, or form

Why HPP Elements?

HPP Elements Aftermarket Parts recognize that when the pressure is not working your HPP Machines are not processing product. HPP Elements is our solution to ensuring your machines uptime.

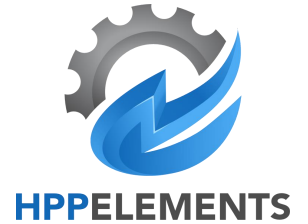
- ✓ Proprietary Process promotes Increased in Cycle Count Life
- ✓ Discounted off the OEM Retail Pricing
- ✓ Ship Anywhere in the USA Next Day
- ✓ Large Inventory Ensures we have Availability when you Need It
- ✓ Only Cycle Warranty in the Industry



HPPELEMENTS

www.HPPAdvisors.com

Why HPP Advisors?

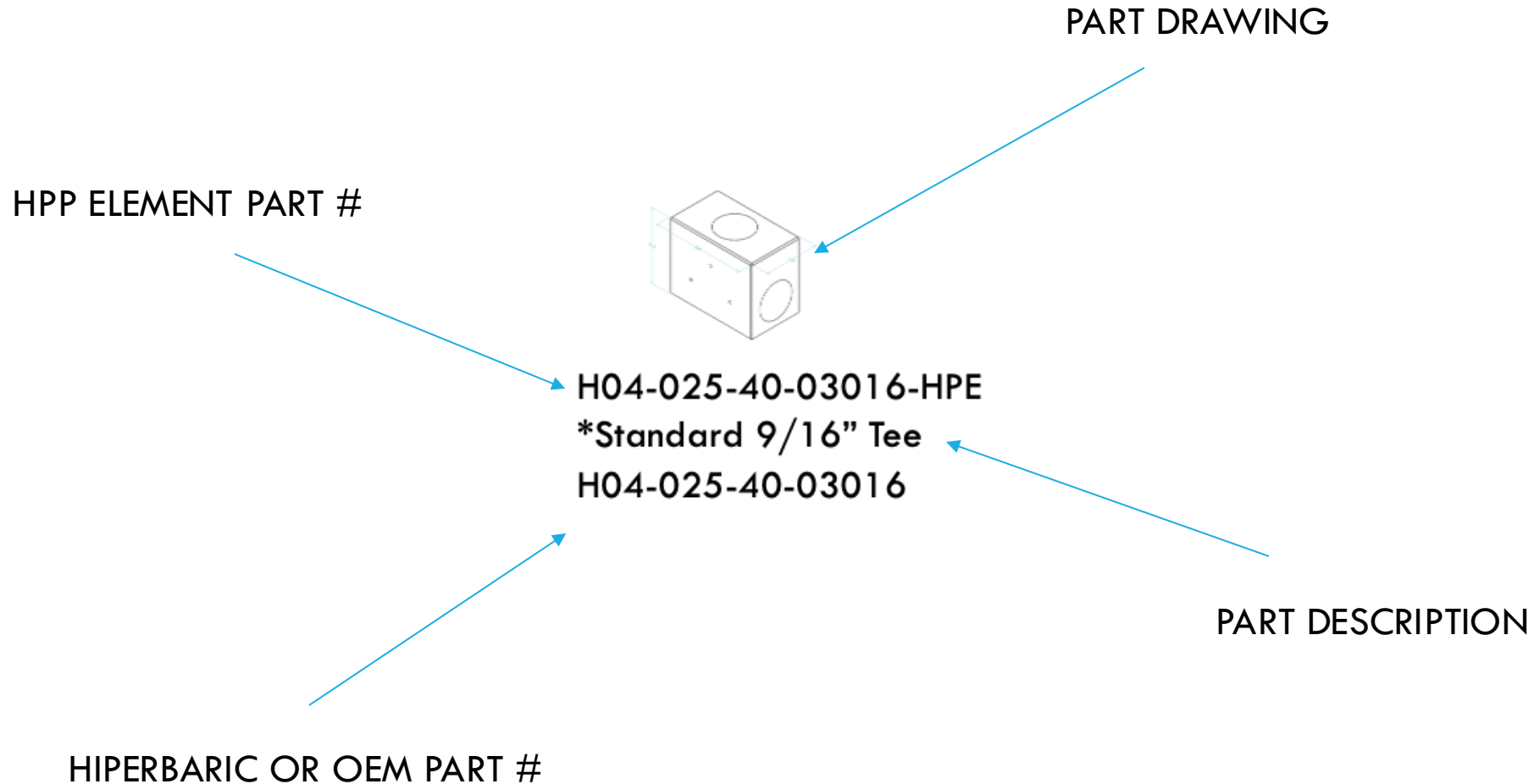
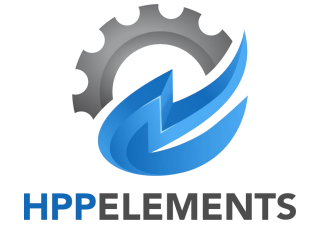


HPP Advisors has long standing, mature supplier relationships across the entire globe. It is OUR commitment Continuous Improvement in all aspects of our business that keeps HPP Elements at the forefront of the HPP Industry. We are commitment to utilizing the most experienced Craftman to produce only the highest quality Hiperbaric Aftermarket Wear Parts, such as, High Pressure Tubing, Fittings, Intensifier Parts, and Decompression Parts in the HPP Food Industry.

Our Hiperbaric Equipment Customers have been in the HPP Food Industry since the very beginning, it is their invaluable insight into our Hiperbaric Aftermarket Wear Parts that is the backbone to our platform of High-Pressure Parts for the Hiperbaric 50L, 300L, 420L, and 525L Models. These same customers that provide their wealth of experience in maintaining these machines, also provide the rigorous field testing that is needed before any product is introduced into the marketplace.

HPP Advisors only business is High-Pressure Processing for the Food Industry. Our parts are tailored to the Industry Standard Operating Pressure of 87,000 psi/600 MPa, with a built-in Safety Factor. It is for this reason we can offer our fittings to our customers at affordable pricing over the OEM.

Instructions for SKU Identification



High Cycle HP160 101k Tubing



3/8" and 9/16"



H02-250-64-0010D, H02-250-64-0020D

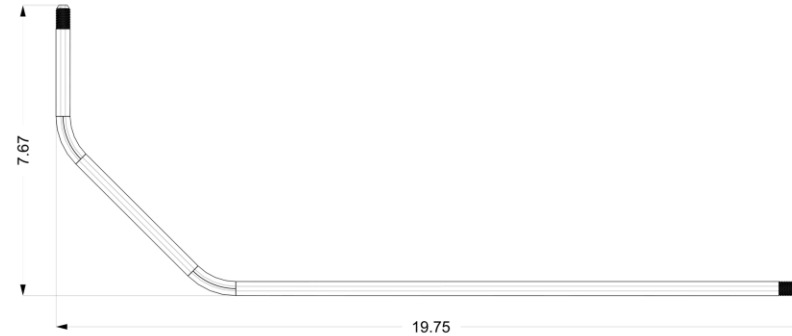
- ✓ Cone and Thread Connections
- ✓ High Strength Stainless Steel with Good Corrosion Resistance
- ✓ 22' – 24' Random / Cut in 1/2 No Charge

- ✓ We have Stock when You Need It
- ✓ Bent Tubing

High Cycle HP160 101k Bent Tubing



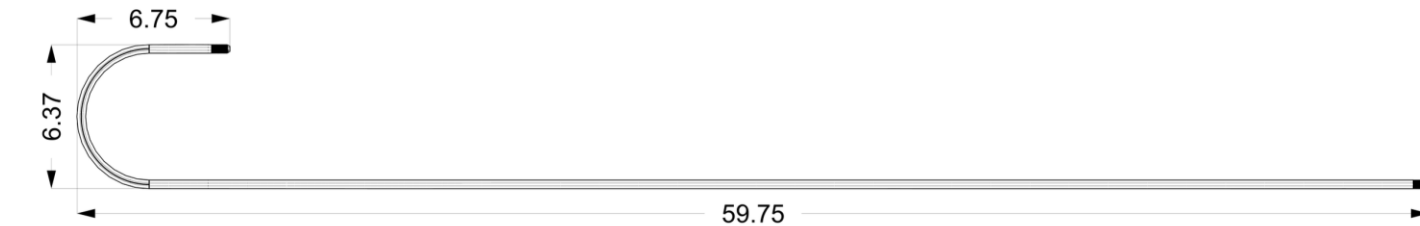
H02-250-64-0050D-HPE
Shaped HP Pipe 3/8" 6,000 bar
length 650 Tee to Tee Intensifier
H02-250-64-0050D



H02-250-64-0020D-HPE
Shaped HP pipe 3/8" 6,000 bar
Short Candy Cane for Intensifier
H02-250-64-0020D



H02-250-64-0010D-HPE
Shaped HP Pipe 3/8" 72 cutting
length, Long Candy Cane
H02-250-64-0010D



High Pressure Fittings



Compatible with the
following HPP Equipment

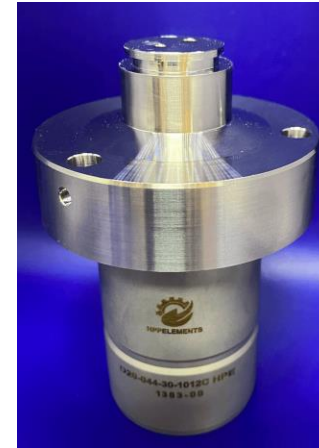
- 55L
 - 120L
 - 135L
 - 300L
 - 420L
 - 525L
- ✓ Operating Pressure 87k (6000 Bar)
 - ✓ Excellent Mechanical Properties for Food Production Environments
 - ✓ High Strength Stainless Steel with Good Corrosion Resistance
 - ✓ Cone and Thread Connections
 - ✓ Part Number, Serial Number Traceability

Existing Aftermarket Parts

Our Selection of Parts increases based upon customer demand.

If you don't see a part you are looking for let us know and we will do our best to fulfill your request!

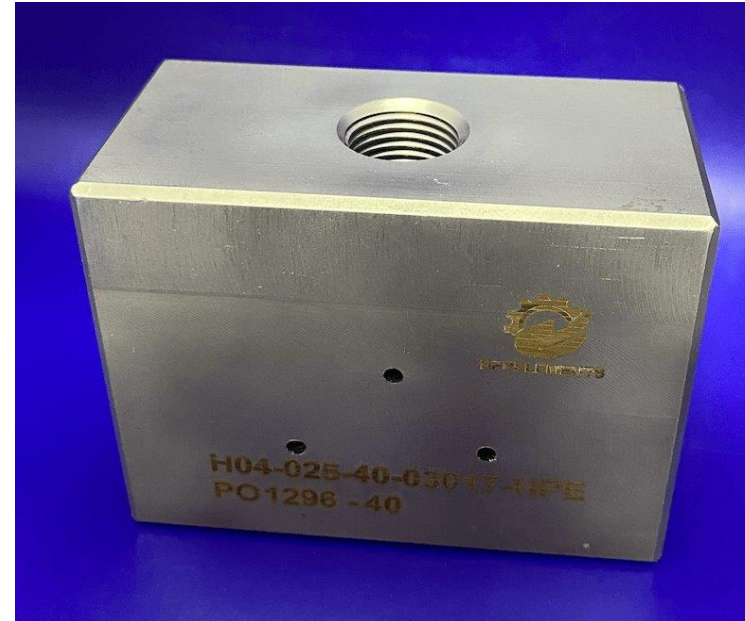
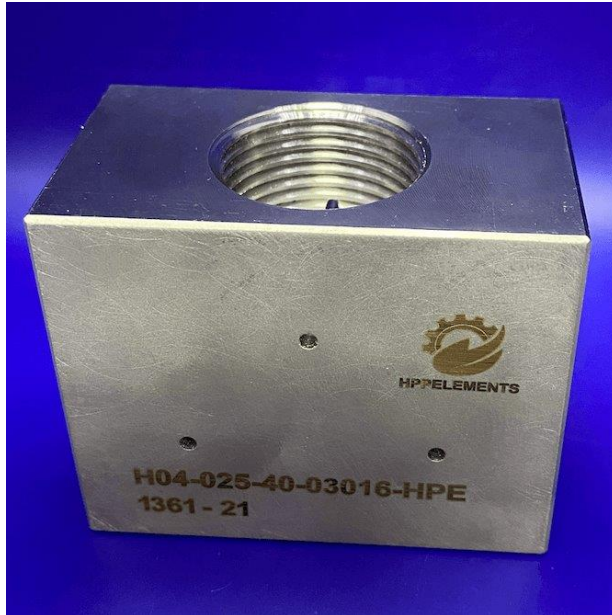
Check our most current Price List for comprehensive Part Listing



HPPELEMENTS

www.HPPAdvisors.com

Fittings, Gland Nuts, Collars, Plugs



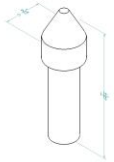
- ✓ Fittings come in any configuration of 9/16" x 3/8"
- ✓ Gland Nuts come standard with Hexagonal Heads



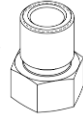
HPPELEMENTS

www.HPPAdvisors.com

Plugs, Gland Nuts, Collars



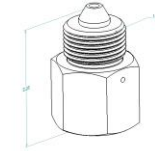
H04-025-09002-HPE
Standard 3/8" Plug
H04-025-09002



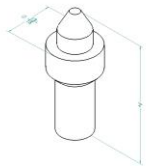
HPPA-00-00G3
Standard 3/8" Gland Nut



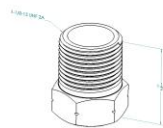
HPPA-00-00C3
Standard 3/8" Collar



H04-025-40-05009-HPE
Standard 3/8" to 9/16" Adapter
H04-025-40-05009



H04-025-40-09001-HPE
Standard 9/16" Plug
H04-025-40-09001



HPPA-00-00G9
Standard 9/16" Gland Nut



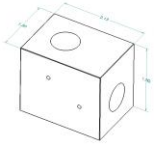
HPPA-00-00C9
Standard 9/16" Collar



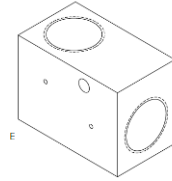
HPPELEMENTS

www.HPPAdvisors.com

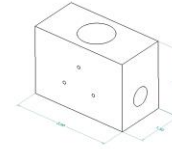
Fittings, Valves



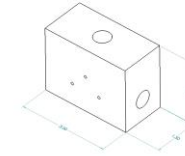
H04-025-40-02006-HPE
*Standard 3/8" Elbow
H04-025-40-02006



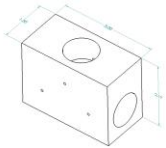
H04-025-40-02011-HPE
*Standard 9/16" Elbow
Mounting HoLe
H04-025-40-02011



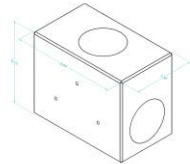
H04-025-40-03018-HPE
*Standard Combo
3/8" x 9/16" x 3/8" Tee
H04-025-40-03018



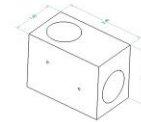
H04-025-40-03017-HPE
*Standard 3/8" Tee
H04-025-40-03017



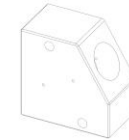
H04-025-40-03011
*Standard 9/16" Tee,
H04-025-40-03011



H04-025-40-03016-HPE
*Reduced 9/16" Tee
H04-025-40-03016



H04-025-40-02002-HPE
*Standard 9/16" Elbow
H04-025-40-02002



H04-025-40-02004-HPE
*Standard 130 Degree
9/16" Elbow
H04-025-40-02004

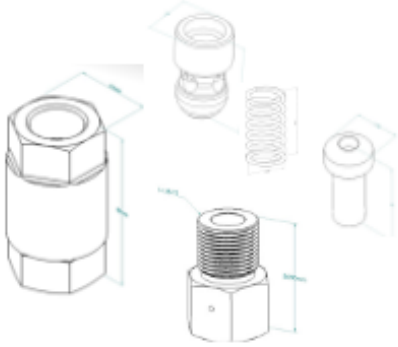
* All Fittings come with Gland Nuts and Collars



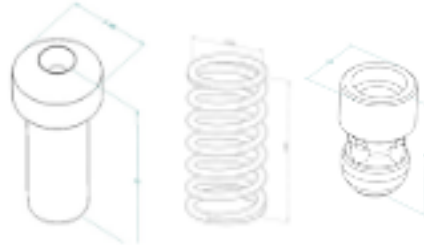
HPPELEMENTS

www.HPPAdvisors.com

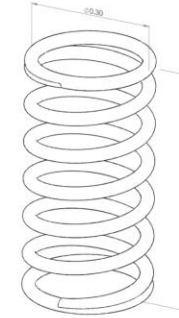
Inline Check Valve



H04-025-40-08017-HPE
Inline Check Valve Body
Assembly (Body, Nut, Spring,
Plug, Bullet)
H04-025-40-08017



H04-025-40-08016-HPE
Inline Check Valve Repair Kit
Plug, Spring, Bullet
H04-025-40-08016



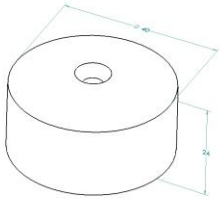
H04-025-40-08018-HPE
Inline Check Valve Spring
H04-025-40-08018



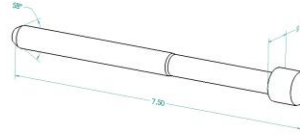
HPPELEMENTS

www.HPPAdvisors.com

Discharge Parts



H02-100-64-0110D-HPE
Interchangeable Seat
H02-100-64-0110D



H02-100-64-0090F-HPE
Valve Closing Needle
H02-100-64-0090F



H02-100-64-0500D-HPE
Valve Insert
H02-100-64-0500D



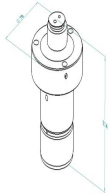
HPPELEMENTS

www.HPPAdvisors.com

Intensifier Parts



ITS



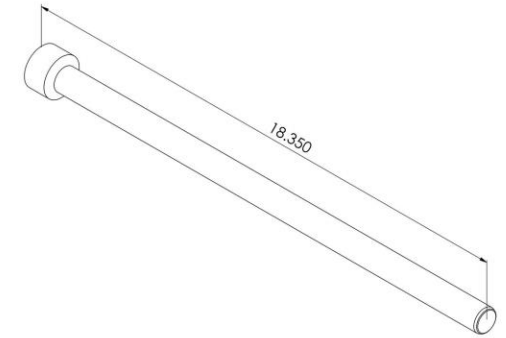
D20-044-30-1012C-HPE
Check Valve Body
D20-044-30-1012C



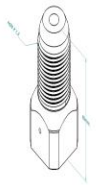
D20-044-30-2006C-HPE
Check Valve Cap
D20-044-30-2006C



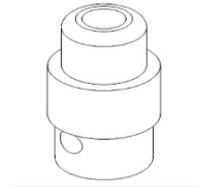
H02-250-60-0130C-HPE
Poppet, Check Valve Low Pressure
H02-250-60-0130C



H02-250-50-1080C-HPE
Plunger
H02-250-50-1080C



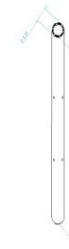
H02-250-60-0090C-HPE
HP Outlet (Check Valve)
H02-250-60-0090C



H02-250-60-2009C-HPE
Poppet, (Check Valve)
High Pressure
H02-250-60-2009C

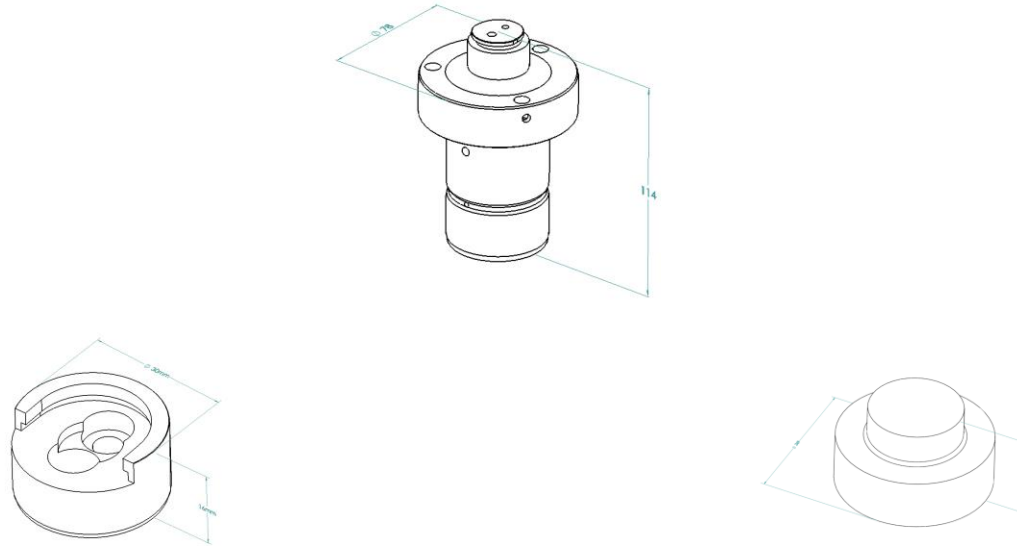


H02-250-60-0150C-HPE
Guiding, Check Valve
Low Pressure
H02-250-60-0150C



D20-044-30-1079C-HPE
Water Jacket Sleeve
D20-044-30-1079C

Intensifier Parts



H02-250-60-1900E-HPE
Intensifier Repair Kit
Check Valve Body, Cap, Poppet Low Pressure
H02-250-60-1900E



HPPELEMENTS

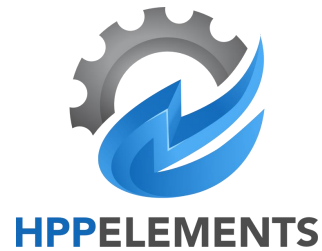
www.HPPAdvisors.com

300L Plug Closing Rings

Coming 1st Quarter 2025



H02-100-21-1251D-HPE
Inner Closing Ring STD
H02-100-21-1251D



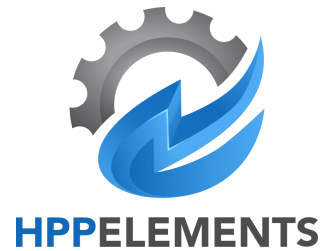
H02-100-21-1254D-HPE
Outer Bronze Closing Ring STD
H02-100-21-1254D

420/525L Plug Closing Rings

Coming 1st Quarter 2025



H02-420-21-1251D-HPE
Inner Closing Ring H20
H02-420-21-1251D

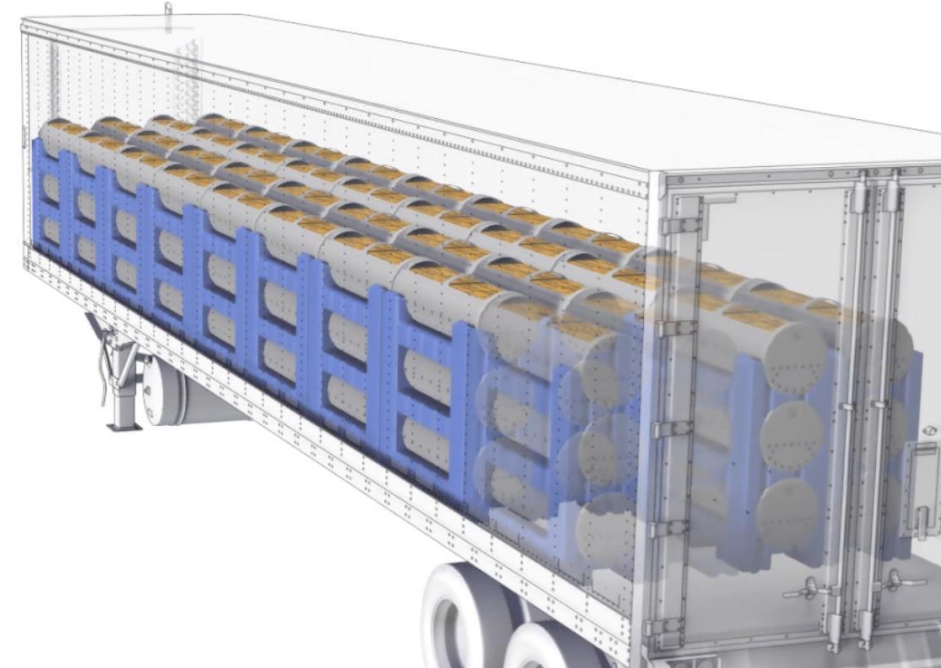


H02-420-21-1254D-HPE
Outer Bronze Closing Ring H420
H02-420-21-1254D

Economical Truckload Transport

FEATURES:

- 4 or 6 Basket Cubes
- Stackable 3 High Carriers with Maximum 18 Baskets
- 4 Carrier Weight 242 lbs. Empty Baskets/No Top
- 6 Carrier Weight 447 lbs. Empty Baskets/No Top
- 16 Carrier Positions per Truckload based on 44,000 lbs.
- Maximum Product Weight Per Truckload 36,000 lbs.*



Teaser Trailer for HPP Elements Direct to Basket Loading Solutions

Contact Us for a Quote

Fittings: Contact Paige@HPPAdvisors.com

Aftermarket Hiperbaric Parts: E-Mail: Aftermarket@HiperbaricParts.com

Phone: 269-462-9730 Office Main Number
269-858-8301 Cell