

HPPADVISORS

AVURE/JBT AFTERMARKET PARTS

2022 Catalog

Why HPP Advisors?



HPPADVISORS

“What is Truly Unique to our Approach is our Customer Inward Approach to product development and coming to Market”

- We source "Made in USA" first and foremost with Certified Suppliers
- Our customers are involved from Day 1 in bringing our Products to Market
- We stand behind our Parts with Industry only Cycle Warranty
- We offer a 15% Discount off the OEM List Price AND
 - Volume Discount Pricing
- Our Supply Chain Management ensures you have Parts when you need them!

Why HPP Advisors?

Our Suppliers have been in the machine metal service for over a combined 60 years in the Midwest United States. This commitment to utilizing the most experienced craftsmanship affords HPP Advisors to produce only the highest quality Avure/KMT HPP Aftermarket Wear Parts, such as, KMT Fittings, KMT Intensifier Parts, Flow Intensifier Parts and Decompression Parts for the HPP Industry.

Our [Avure Equipment Customers](#) are the pioneers in the HPP Industry having HPP Equipment as far back as 2007, it is their invaluable insight that is the backbone to our platform of High Pressure Parts for the Avure/JBT AV-M and AV-X Models. These same customers that provide their wealth of experience in maintaining these machines, also provide the rigorous field testing that is needed before any product is introduced into the marketplace.

HPP Advisors only business is High Pressure Processing for the Food Industry. Our parts are tailored to the Industry Standard Operating Pressure of 87,000 psi/600 MPa. It is for this reason we can offer our Avure/KMT HPP Aftermarket Wear Parts to our customers at affordable pricing over the OEM.



High Cycle HP160 101k Tubing



3/8" and 9/16"

- ✓ Cone and Thread Connections
- ✓ High Strength Stainless Steel with Good Corrosion Resistance
- ✓ 22' – 24' Random / Cut in 1/2
No Charge



3/8" Custom Bending

- ✓ We have Stock when others Don't
- ✓ High Strength Stainless Steel with Good Corrosion Resistance
- ✓ Nipples



HPPADVISORS

High Pressure Fittings

Compatible with the following HPP Equipment

Avure™/JBT

- AV10 (formerly 100L)
- AV-20M, 30M, 40M (formerly 350L)
- AV-40X, 50X, 60X, 70X
- 680L



HPPADVISORS

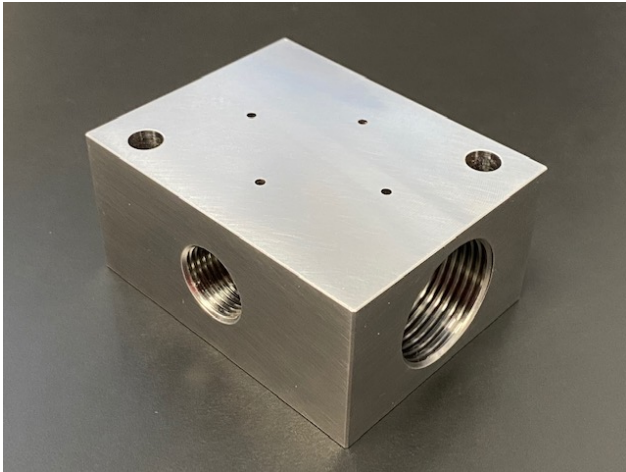
- ✓ Operating Pressure 87k (6000 Bar)
- ✓ Excellent Mechanical Properties for Food Production Environments
- ✓ High Strength Stainless Steel with Good Corrosion Resistance
- ✓ Cone and Thread Connections
- ✓ Part Number, Serial Number Traceability

Avure/Flow/KMT Aftermarket Parts

Our Selection of Parts grows based on upon customer demand.

If you don't see a part you are looking for let us know and we will do our best to fulfill your request!

We included below each part the Original Manufacture Part Number when available and List Price for your convenience!



Fittings, Gland Nuts, Collars, Plugs



HPPADVISORS

- ✓ Gland Nuts come standard with Hexagonal Heads



- ✓ Fittings come in any configuration of 9/16" x 3/8"



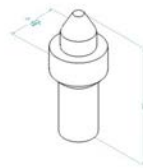
Plugs, Gland Nuts, Collars



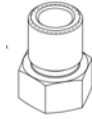
HPPA-00-00P3 \$28
Standard 3/8" Plug
Autoclave 100CP60



HPPA-AV-00P3 \$ \$30
Flow 3/8" Plug
012252-1



HPPA-00-00P9 \$121.70
Standard 9/16" Plug
Autoclave 100AP90



HPPA-00-00G3 \$13.50
Standard 3/8" Gland Nut



HPPA-AV-00G3 \$14.50
Flow 3/8" Gland Nut
A-2838



HPPA-00-00G9- \$18.28
Standard 9/16" Gland Nut
ATO1409



HPPA-00-00C3 - \$9.45
Standard 3/8" Collar
Flow A-2839



HPPA-00-00C9 - \$15.48
Standard 9/16" Collar
ATO1408

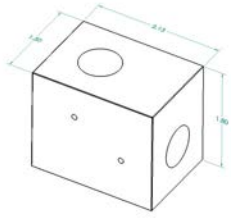


HPPA-00-0093 – 281.35
Standard 3/8" to 9/16
Adapter
Autoclave 100M96B3

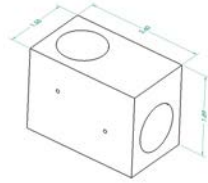


HPPADVISORS

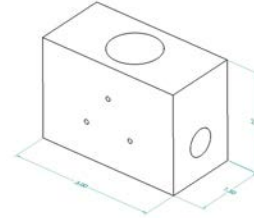
Fittings, Valves



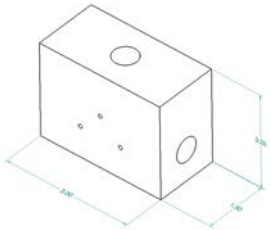
HPPA-00-00E3 \$205.13
*Standard 3/8" Elbow
Autoclave 100CL6600
ATO1401



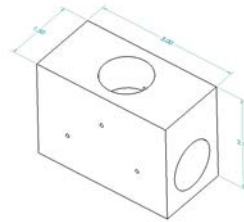
HPPA-00-00E9 - \$287
*Standard 9/16" Elbow
Autoclave 100CL9900
ATO1402



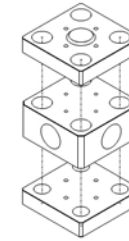
HPPA-00-OCT3 – 385.31
*Standard Combo
3/8" x 3/8" x 9/16" Tee
ATO1400



HPPA-00-00T3 – \$233.98
*Standard 3/8" Tee
Autoclave 100CT6660



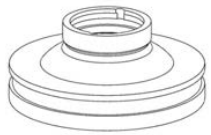
HPPA-00-00T9 \$358
*Standard 9/16" Tee,
Autoclave 100CT9990



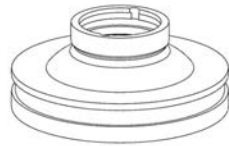
HPPA-AV-04W3 – \$421.91
**Flow 3/8" Truss Cross
Flow 014523-1

* All Fittings come with Gland Nuts and Collars

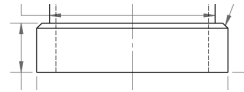
Intensifier Parts – Coming in 4th Quarter 2022



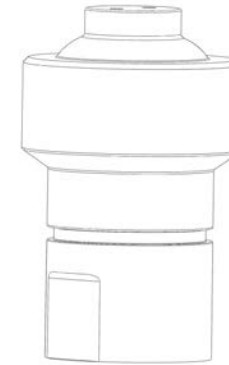
HPPA-AV-5803
Carrier Seal
040015-1



HPPA-KMT-5803
Carrier Seal
ATO1381

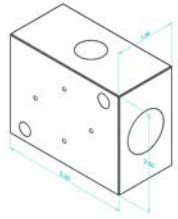


HPPA-00-5803-1
Replacement Bushing

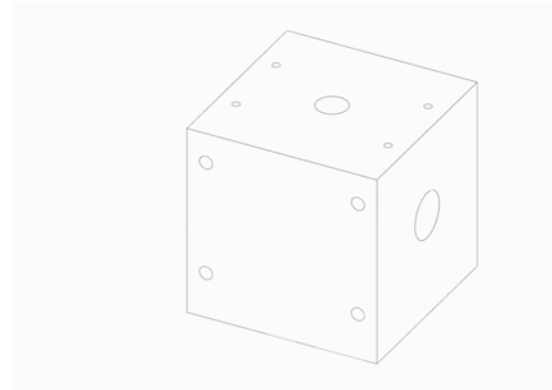


HPPA-KM-5804
Check Valve
ATO1413

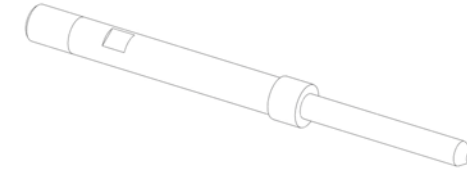
Decompression Parts – Coming 3rd Quarter 2022



HPPA-AV-5901
Bleed Down Body
011742-1



HPPA-KM-5901
Discharge Block
ATO1230



HPPA-KM-5905
Discharge Stem UHP
Water VLV
ATO1230



HPPA-KM-5907
PKG Assy UHP VLV 7 Pieces
ATO1232



HPPA-KM-5906
PKG FOL VLV Stem Assy
ATO1231



HPPA-KM-5904
Seat UHP VLV Assy
ATO1233

Ask Us About our Full Line of HPP Baskets, Basket Carriers and Handling Equipment



AV-M Series



AV-X Series

Contact Us for a Quote

Fittings: Contact Paige@HPPAdvisors.com

Aftermarket Flow/Avure™/JBT Parts: Contact Aftermarket@AvureParts.com

Phone: 269-462-9730

269-858-8301 Cell