



2020 Carriers and Pallets

# 59" x 14 3/4" Standard No Rib Tube

Compatible with the following Machines

➤ Hiperbaric  
525L

3  
per  
cycle

➤ Avure™  
350L

2  
per  
cycle

➤ Avure™  
AV20/30M

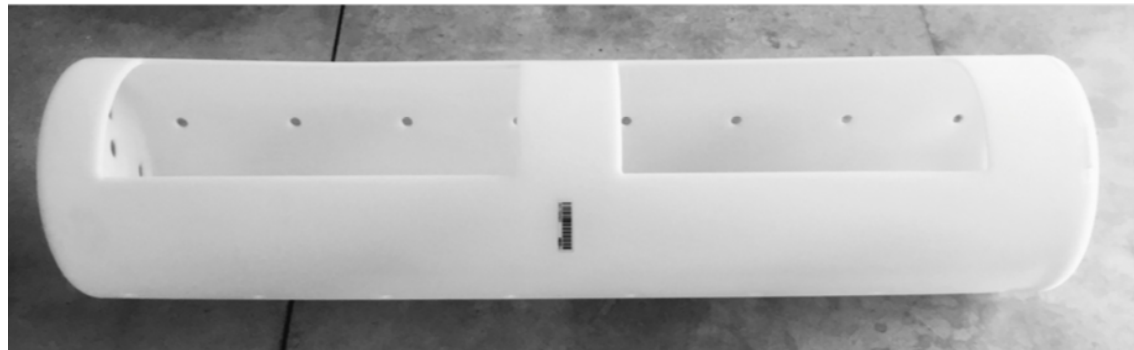
2  
per  
cycle

➤ Avure™ AV40-  
70M

2  
per  
cycle

➤ Uhde 350—60 & 700-60

2  
per  
cycle



Optional Removable



# 59" x 18" Carrier

Compatible with the following Machines

➤ Avure™  
40X

2  
per  
cycle

➤ Avure™  
AV50X

2  
per  
cycle

➤ Avure  
AV60X

2  
per  
cycle

➤ Avure™  
AV70X

2  
per  
cycle



Optional Removable

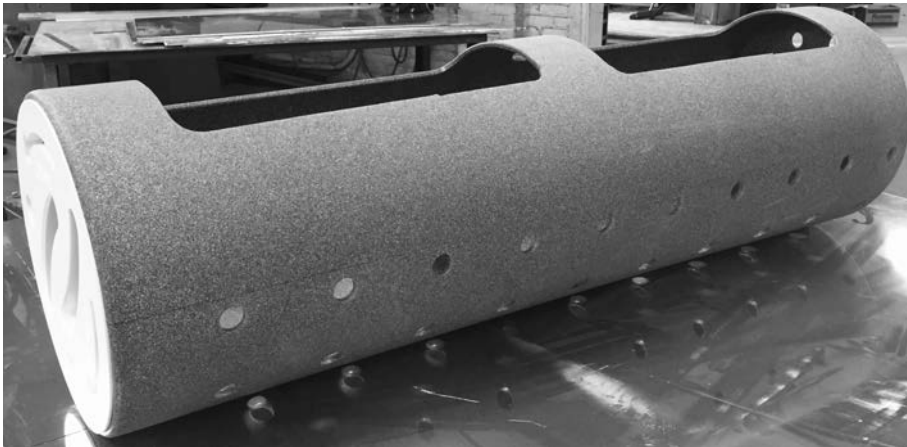


# 48 1/8" x 14 3/4" Carrier

Compatible with the following Machines

- Hiperbaric  
420L

3  
per  
cycle



Optional Removable



# 34 1/2" x 7 1/4" Carrier

Compatible with the following Machines

➤ Hiperbaric

55L

2  
per  
cycle



# Customer Carriers

Compatible with the following Machines

- Hiperbaric  
420L – 4 to a cycle
- IDUS  
50L
- UHDE  
55-60L
- UHDE  
160-60L



# 6 Tube Palletizer - 5915

Compatible with the following Tubes

- 59" x 14 3/4" Carrier
- 48" x 14 3/4" Carrier
- Stackable 3 High



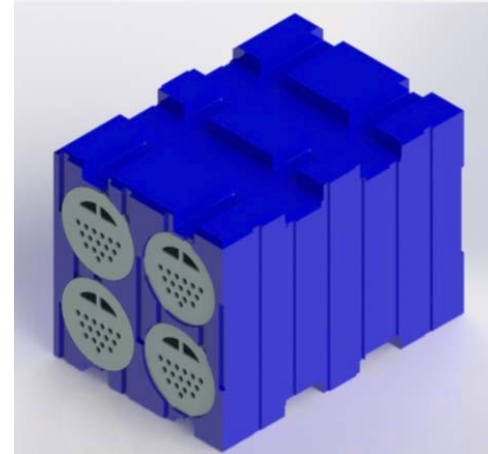
Dimensions

48"w x 60" L x 40" H

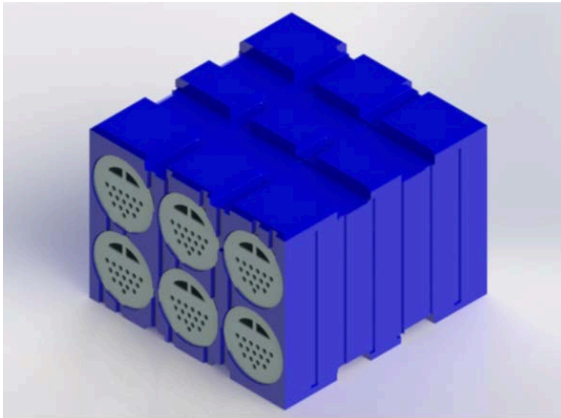
# 4 & 6 Tube Palletizer - 5918

Compatible with the following Tubes

- 59" x 18" Standard No Rib Tube
- Stackable 3 High



Dimensions  
44" w x 60" L x 46" H



Dimensions  
58" w x 60" L x 46" H



# Optional Features

- Removable Lids for dumping
- Asset Traceability Tagging
- Customized In Mold Bar Coding
- RFID Tagging
- HPP Temperature Monitoring
- Customized Basket Design

*Tolerances - Nominal dimensions are listed in this document with a tolerance of +/- 0.01 inch*



# Contact Us

[Info@HPPAdvisors.com](mailto:Info@HPPAdvisors.com)

[www.HPPAdvisors.com](http://www.HPPAdvisors.com)



**HPPADVISORS**